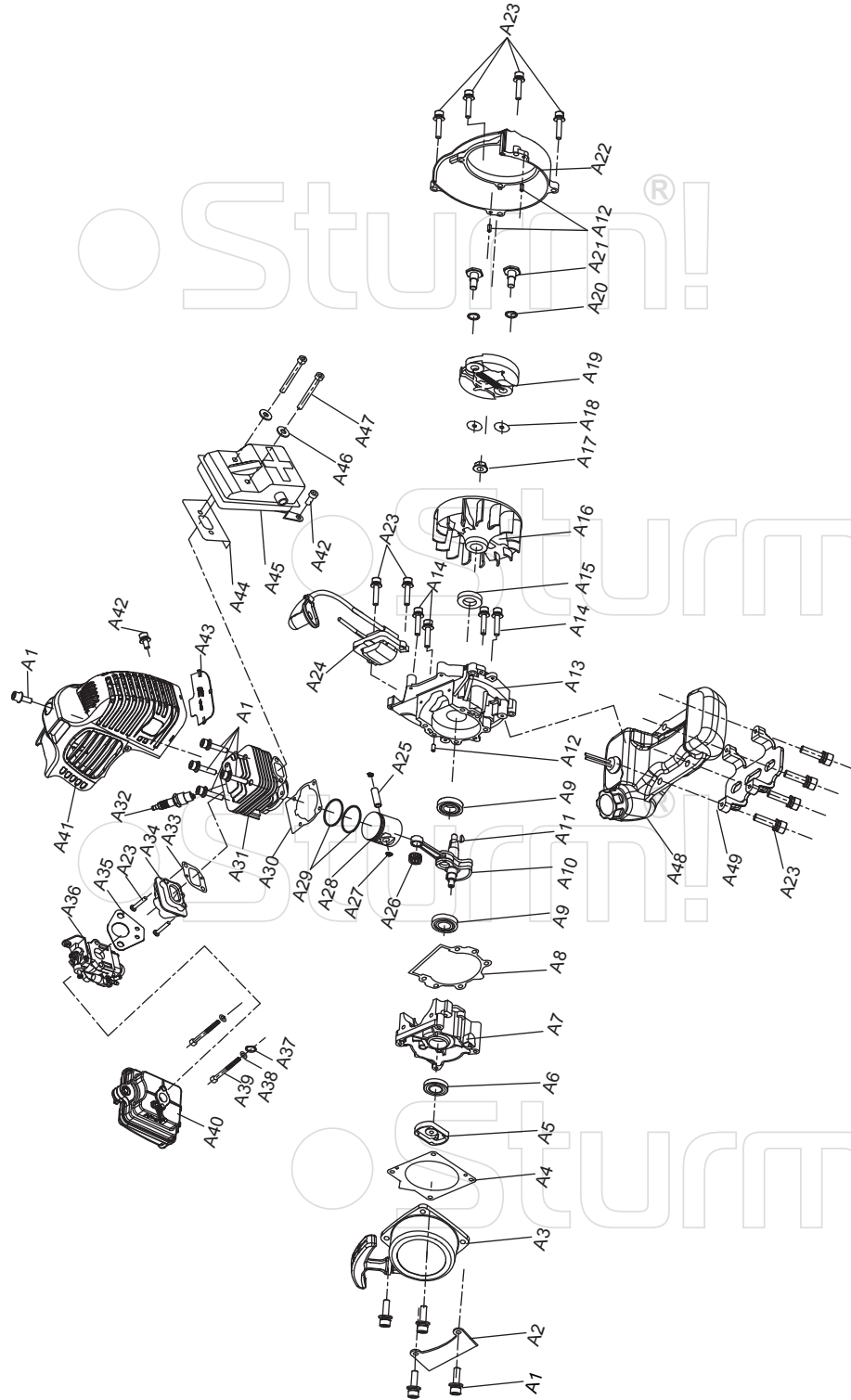


BT8942D BT8952D

NO.	DESCRIPTION
A1	305 CONNECTION PLATE ASSEMBLY
A2	HEXAGON SOCKET SCREWS\M6*30
A3	HEXAGON SOCKET SCREWS\M5*14
A4	HEXAGON SOCKET SCREWS\M6*25
A5	OIL BEARING
A6	STEELE STRAIGHTENS THE RIGHT HANDLE
A7	1500 ALUMINUM TUBE
A8	9 TOOTH DRIVE SHAFT 1530
A9	RINGS
A10	HEXAGON SOCKET SCREWS\M5*20
A11	26 HANGING RING CLIP
A12	HEX NUTS\BLACK\M5\THICK 5.5
A13	HEXAGON SOCKET SCREWS\M5*20
A14	261 HANDLE ON THE FIXED PLATE ON THE PRESSURE PLATE
A15	261 HANDLE HOLDER IN THE PRESSURE PLATE
A16	261 HANDLE FIXED SEAT SHOCK\BLACK\26 ALUMINUM TUBE
A17	261 HANDLE FIXED SEAT UNDER PRESSURE PLATE
A18	HEXAGON SOCKET SCREWS\M5*25
A19	STEELE LEFT HANDLE
A20	TRIANGULAR HEAD GEAR BOX
A21	NYLON HIT THE GRASS HEAD\2.4*6
A22	3T255 BLACK BLADE
A23	HEXAGON SOCKET SCREWS\M6*20
A24	PROTECTIVE COVER PLATE
A25	PROTECTIVE COVER\PP
A26	PROTECTIVE COVER SIDEBAR\PA6
A27	CROSS TAPPING SCREW\ST5*12
A28	NEW TWO HOLES SMALL BLADE
A29	26 THROTTLE CARD

RU20181103
VER:2.1



ENGINE FOR BT8942D BT8952D

NO.	DESCRIPTION	NO.	DESCRIPTION
A1	HEX COMBINATIN SCREW M5*20	A30	CYLINDER GASKET
A2	330 OIL POT HOLDER WHITE COLOR	A31	CYLINDER
A3	415B EASY STARTER	A32	SPARK PLUG L7T
A4	415B\520B STARTER GASKET	A33	INTAKE PIPE PAD
A5	415B NORMAL DRIVER PLATE	A34	415\520B INLET PIPE
A6	OIL SEAL 12*22*7	A35	415B\520B CARBURETOR PAD
A7	LEFT CRANK CASE	A36	415B\520B CARBURETOR
A8	415B\520B BOX PAD	A37	SADDLE PAD BLACK
A9	DEEP GROOVE BALL BEARING 6202	A38	FLAT WASHERS WHITE
A10	520B CRANKSHAFT CONNECTING ROD	A39	HEX COMBINATIN SCREW M5*20
A11	SEMICIRCLE KEY	A40	AIR FILTER ASSEMBLY
A12	CYLINDRICAL PIN	A41	520B CYLINDER COVER
A13	RIGHT CRANK CASE	A42	HEX COMBINATIN SCREW M5*20
A14	HEX COMBINATIN SCREW M5*35	A43	HEAT SHIELD FOR CYLINDER COVER
A15	OIL SEAL 15*30*7	A44	MUFFLER INSULATION PLATE GASKET
A16	415B\520B FLY WHEEL	A45	MUFFLER
A17	HEX FLANGE SURFACE NUT M8*1.25	A46	FLAT WASHERS
A18	FLAT WASHERS 8*16*1	A47	HEX COMBINATIN SCREW M6*55
A19	415B TWO SHOE BLACK CLUTCH	A48	OIL CAN
A20	SADDLE PAD	A49	OIL CAN STAND
A21	OUTSIDE HEXAGONAL SCREW M8*25		
A22	SIDE COVER		
A23	HEX COMBINATIN SCREW M5*25		
A24	TU430 IGNITION COIL		
A25	520B PISTON PIN		
A26	NEEDLE BEARING K101415		
A27	520B PISTON PIN CIRCLIP		
A28	520B PISTON PIN		
A29	520B PISTON RING		